



MAQUETAS

Y MODELOS

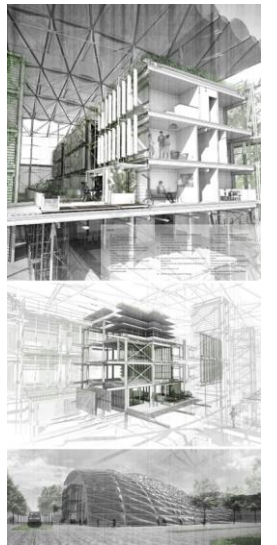
---

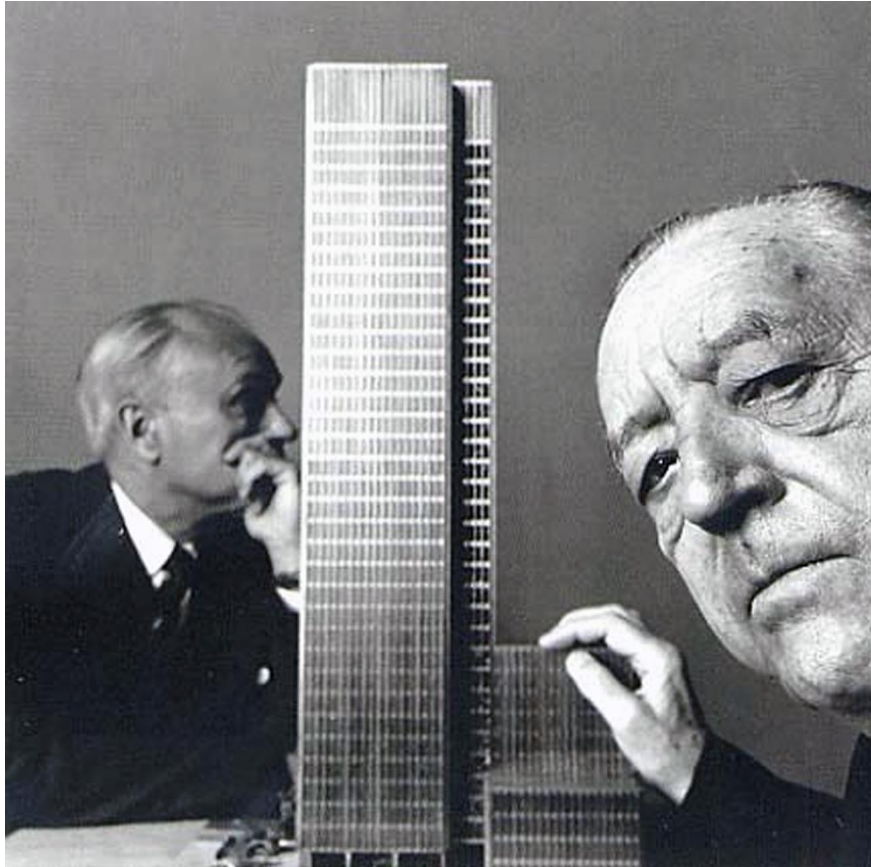
UNIVERSIDAD JAVERIANA Facultad de Arquitectura y Diseño Departamento de Arquitectura

Arq. Andrés Pulido Ospina

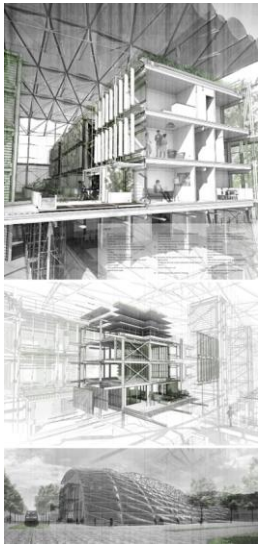
“La elaboración de una **maqueta** consiste en darle **escala al material** para que bajo la **luz** se convierta en **arquitectura**”

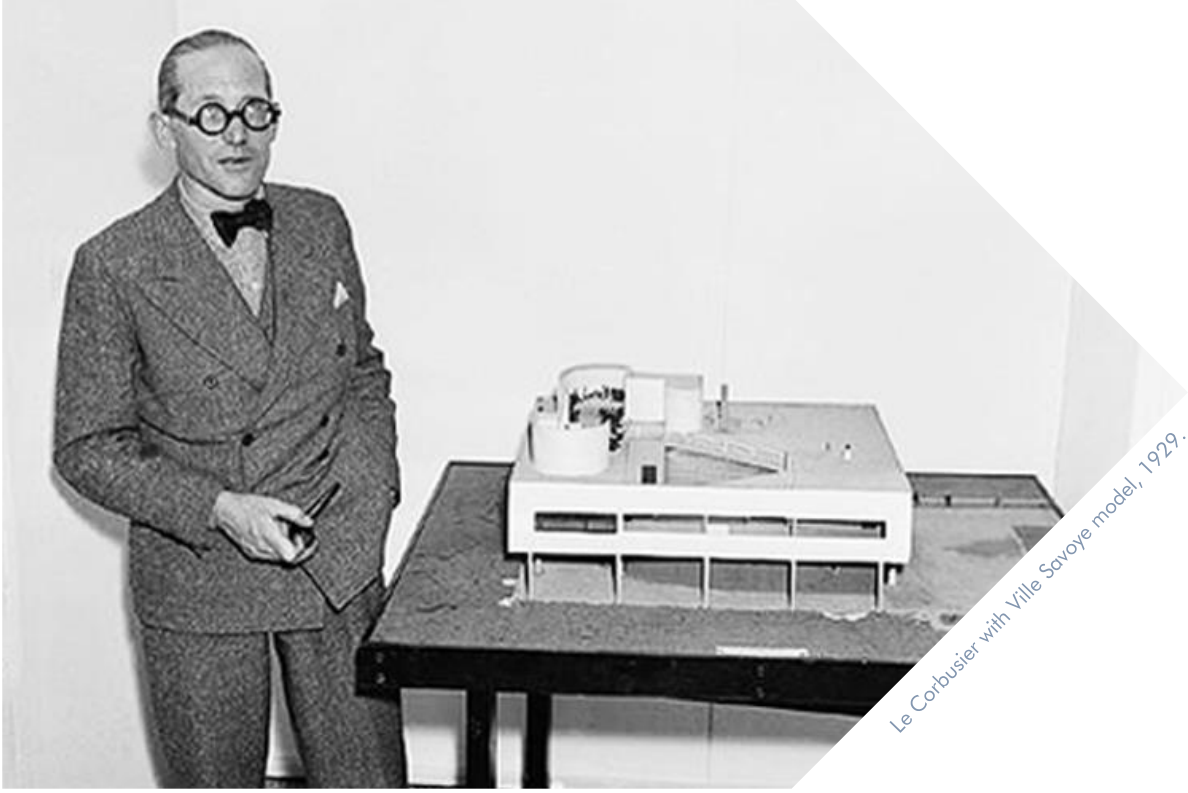
Arq. Miguel Forero



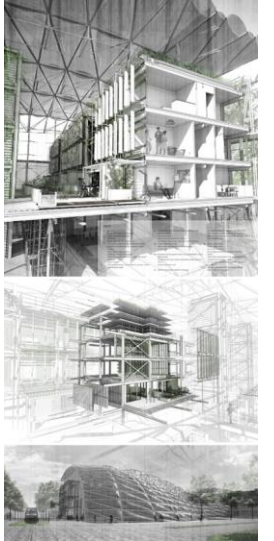


Philip Johnson and Ludwig Mies van der Rohe with the Seagram building model, 1954.





Le Corbusier with Villa Savoye model, 1929.





El modelo arquitectónico es parte del proceso creativo.

no es un resultado final

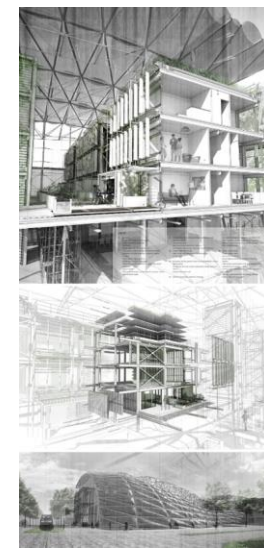
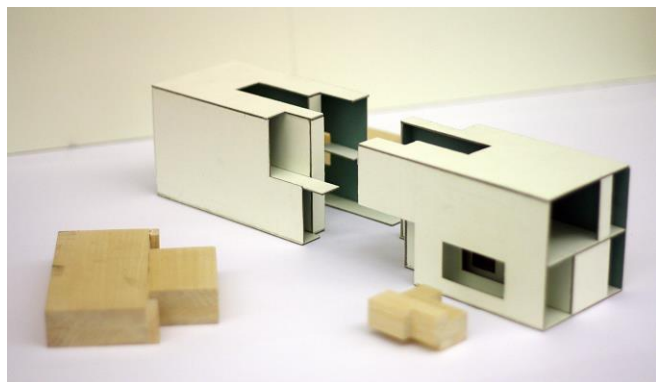
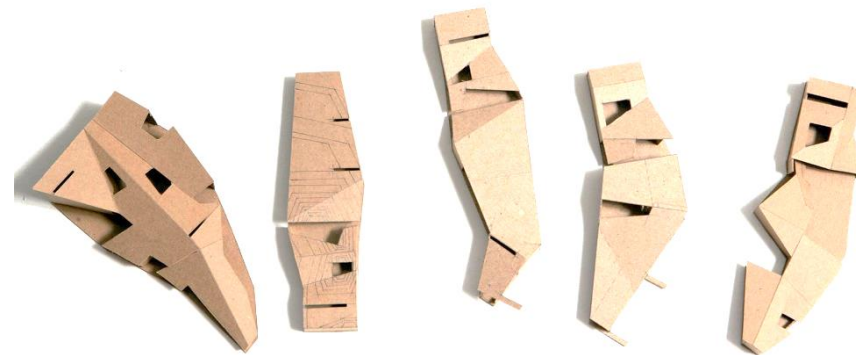
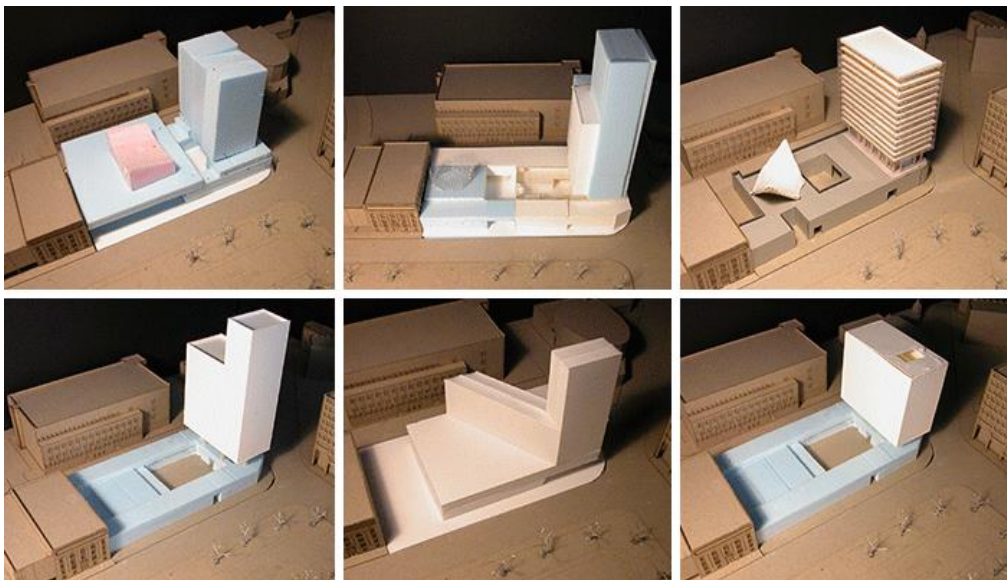
es un modo de pensamiento

genera conocimiento

es una realidad experimentada

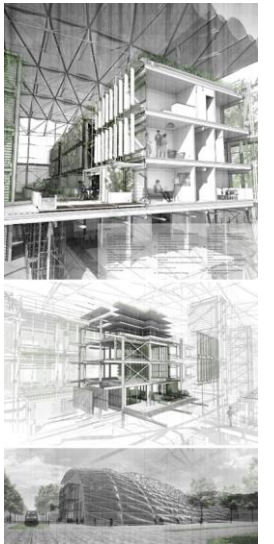
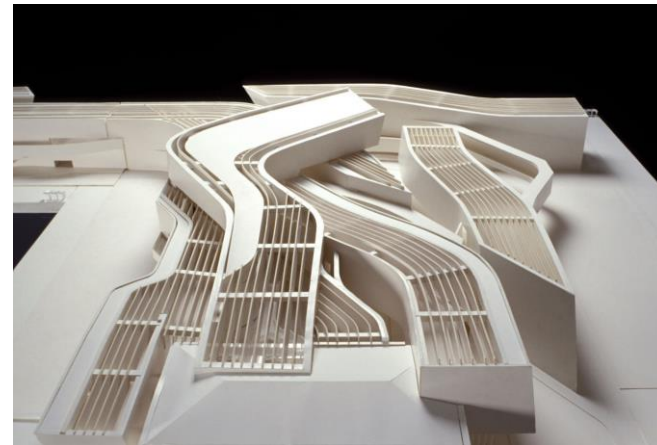


# MAQUETA DE ESTUDIO O TRABAJO

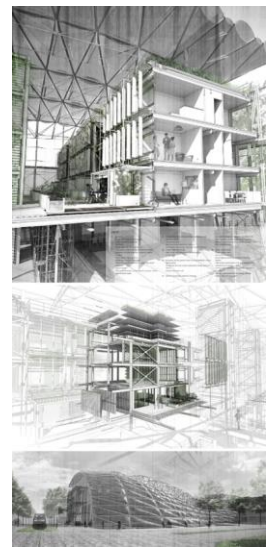




MAQUETA DE PRESENTACION



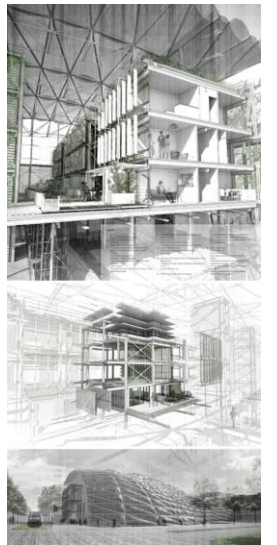
# MAQUETA COMERCIAL

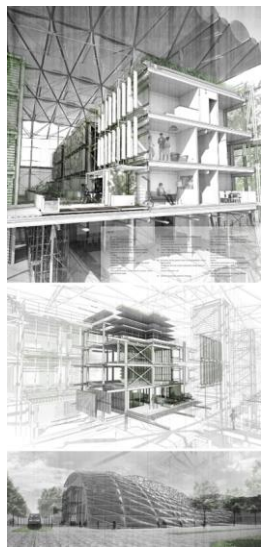


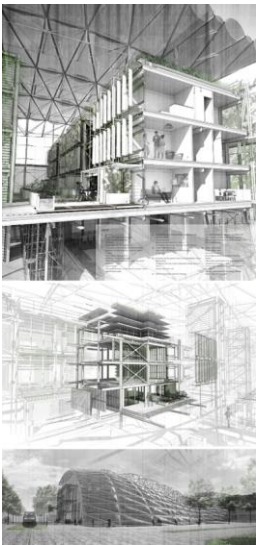
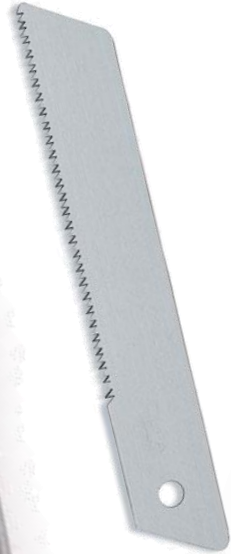
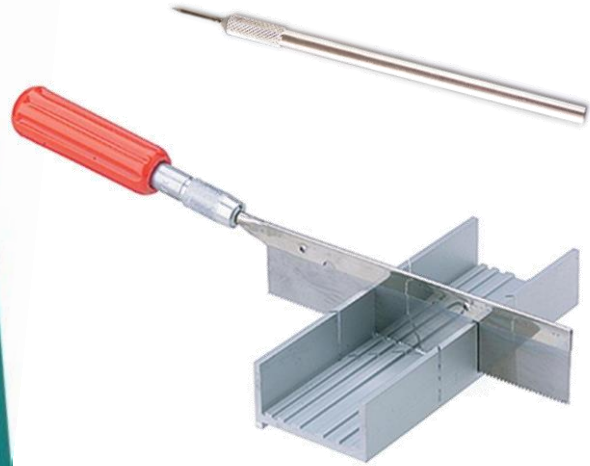
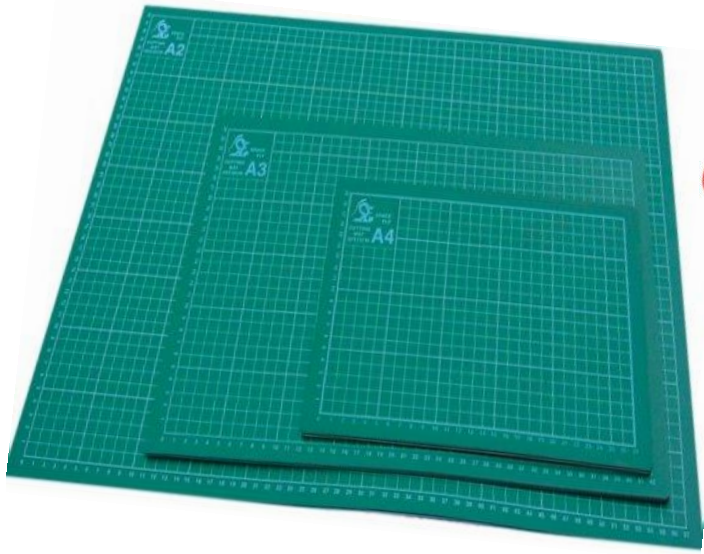


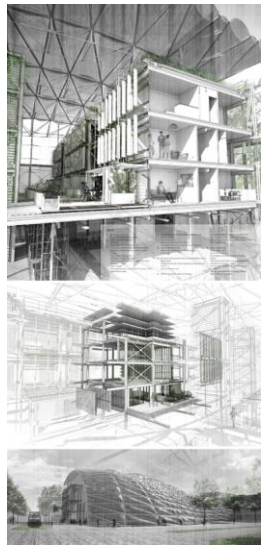


# ETICA DE LA ARQUITECTURA A ESCALA











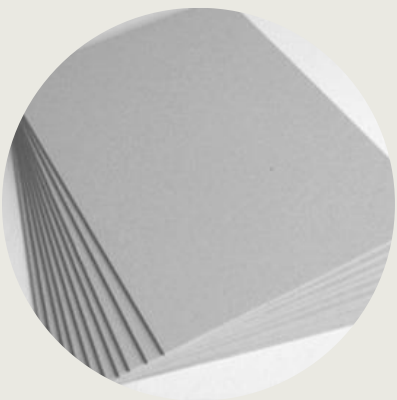
Cartón **Paja**



Cartón **Respaldo** o **Board** (caja)



Cartón **Corrugado** y Micro Corrugado



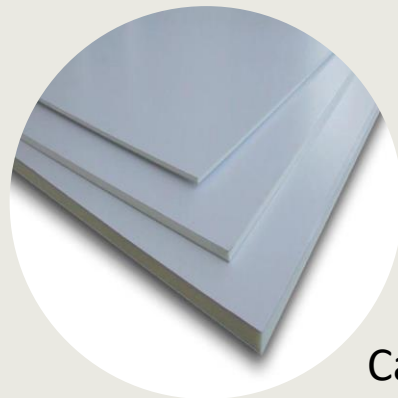
Cartón **Industrial**



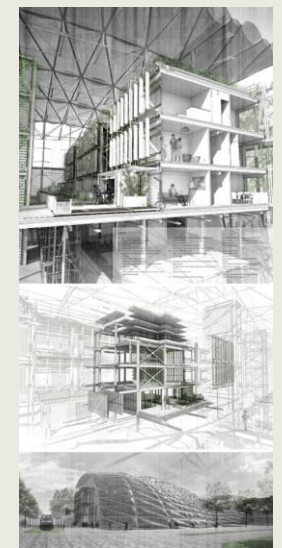
Cartón **Basik**



Cartón **Kraft**



Cartón **Maqueta** o **Pluma**

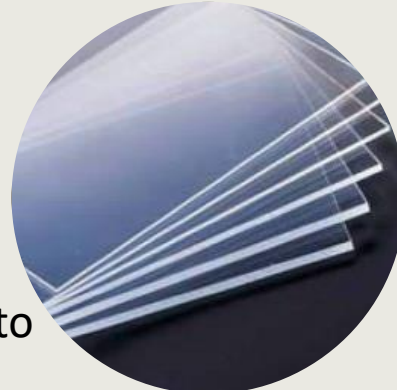




Papel **Bond 28**



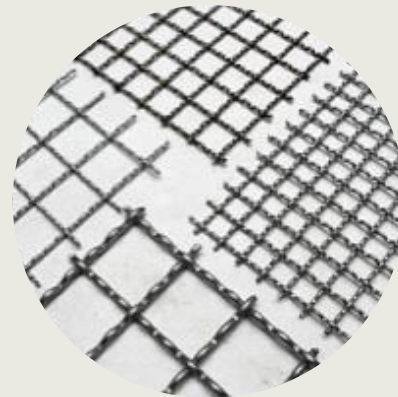
**Acetato Postformado**



**Acrílico y Policarbonato**



Papel **Canson**



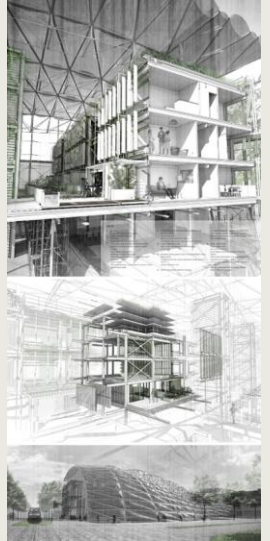
**Mallas y Alambres**

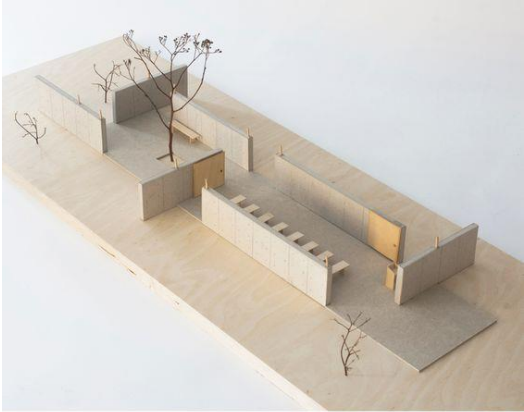


**Acetato Laminación**



Piezas de **Balso** y otras maderas



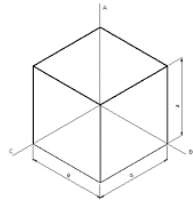


# COMPONENTES

ESCALA



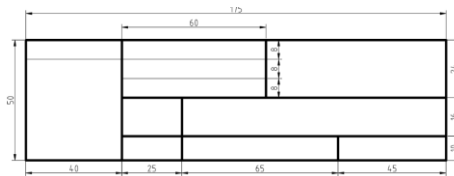
SCALE BAR 1:1250



TAMAÑO

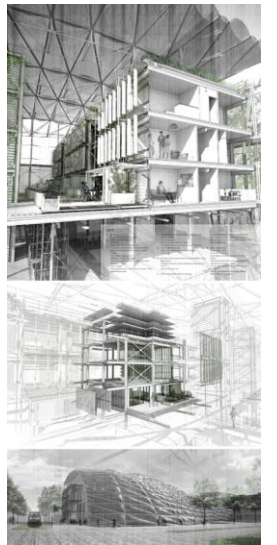
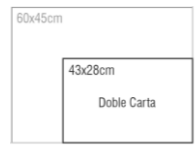


ORIENTACIÓN



ROTULO

FORMATO



$$\text{ESCALA } 1: = \frac{\text{DIMENSION REAL}}{\text{DIMENSION REDUCIDA}}$$

# ESCALA

1: 20

1: 25

1: 50

1: 75

1: 100

1:125

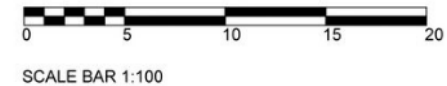
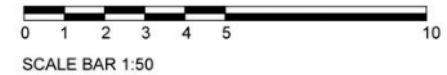
1:200

1:250

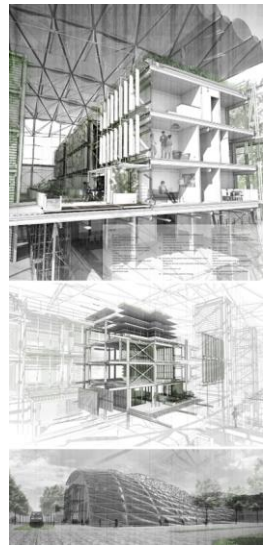
1:500

1:750

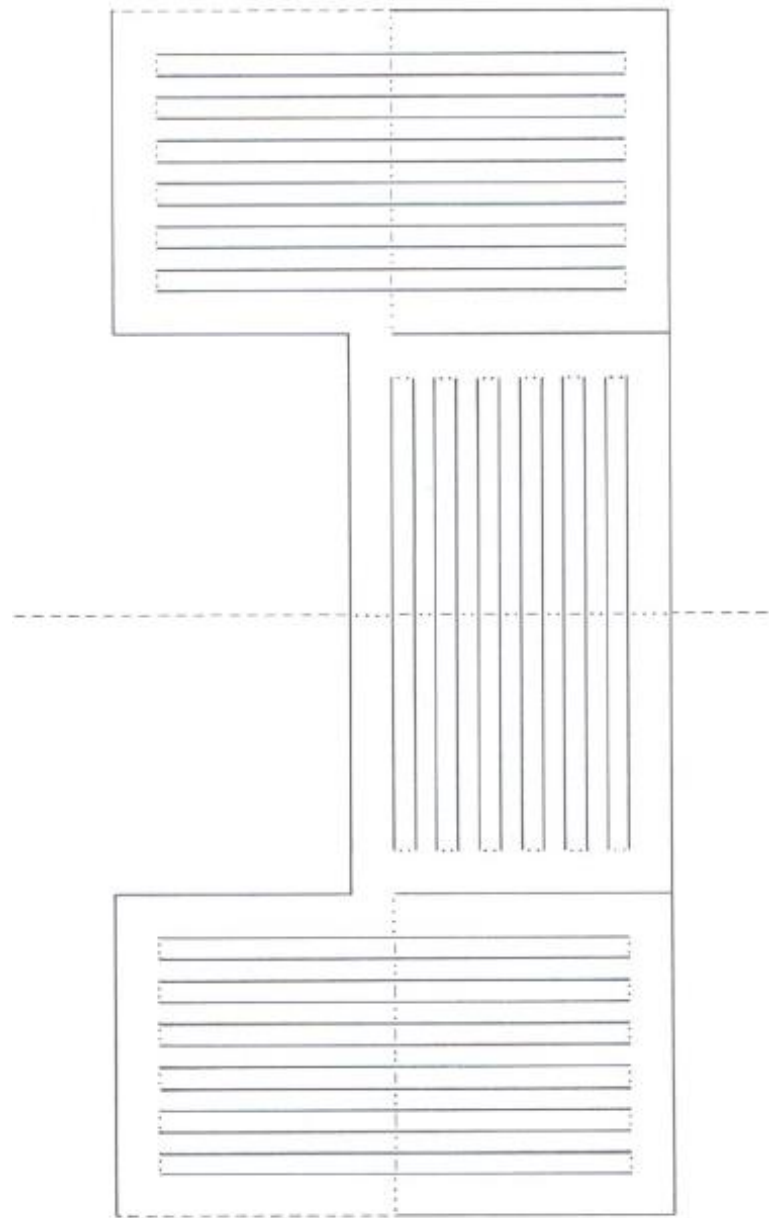
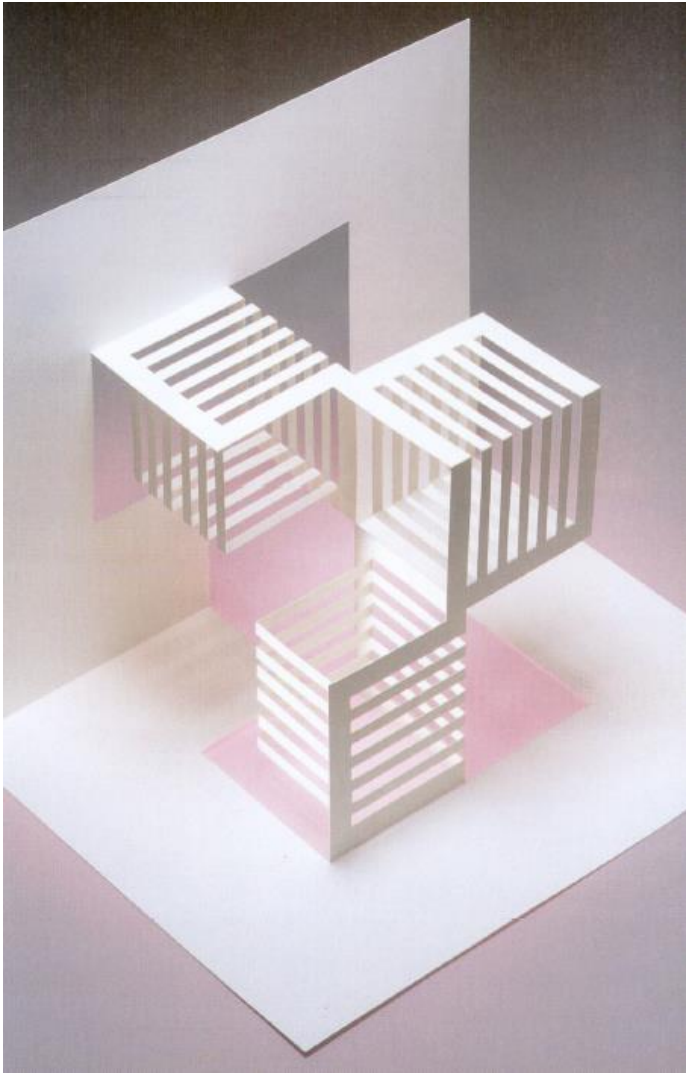
1:1000



		LARGO		ANCHO		ALTO	
		DIMENSION REAL					
ESCALA= 1: 100		41	Metros	12	Metros	0	Metros
		0,41	Metros	0,12	Metros	0,00	Metros
		DIMENSION REDUCIDA					





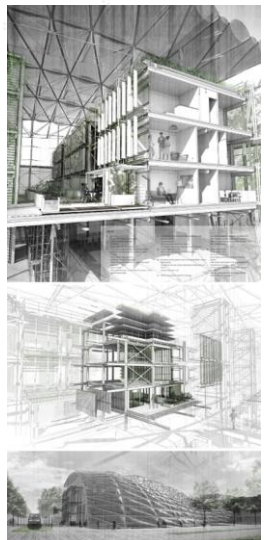


- Schnittlinie
- ..... Bergfaltung (siehe Foto)
- Talfaltung (siehe Foto)
- Hilfslinie

**A** → **B** einen Teil des Papiers so auf den anderen schieben, daß Punkt A auf Punkt B trifft

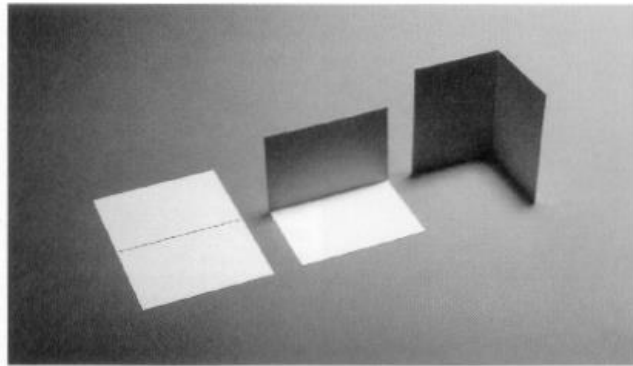
**A** ↷ **B** einen Teil des Papiers so auf den anderen drehen, daß Punkt A auf Punkt B trifft

Die Sterne geben den Schwierigkeitsgrad an:  
 \* leicht  
 \*\* mittel  
 \*\*\* schwer

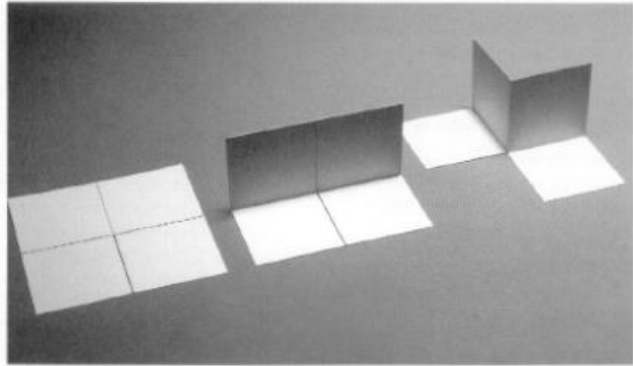


# KIRIGAMI

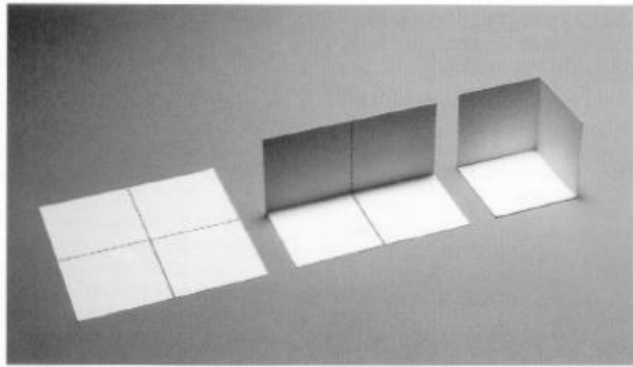
Phantastische Papierarbeiten - RAMIN RAZANI, 1993.



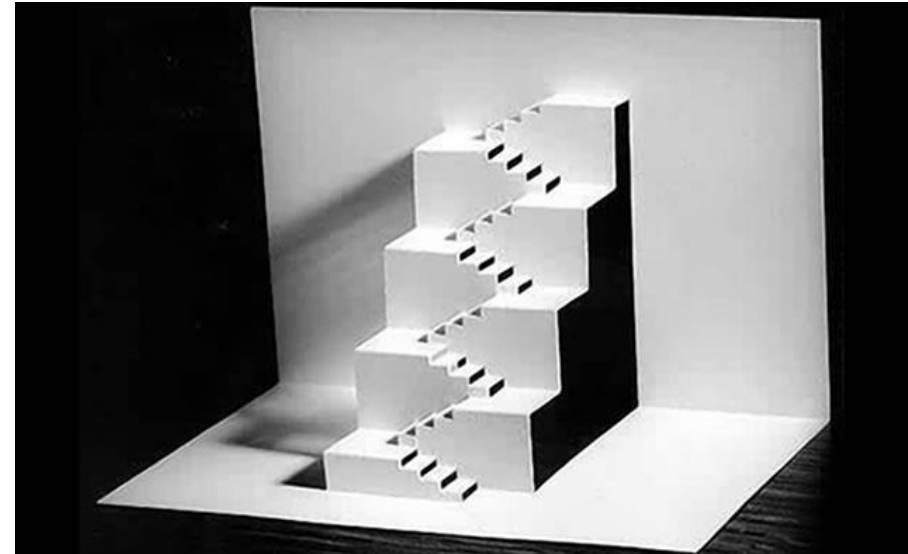
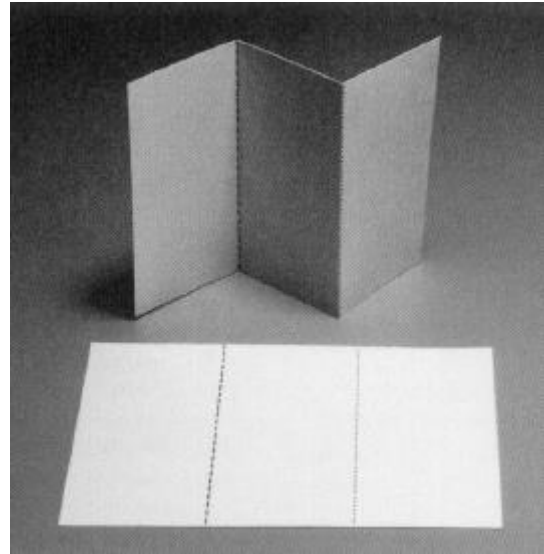
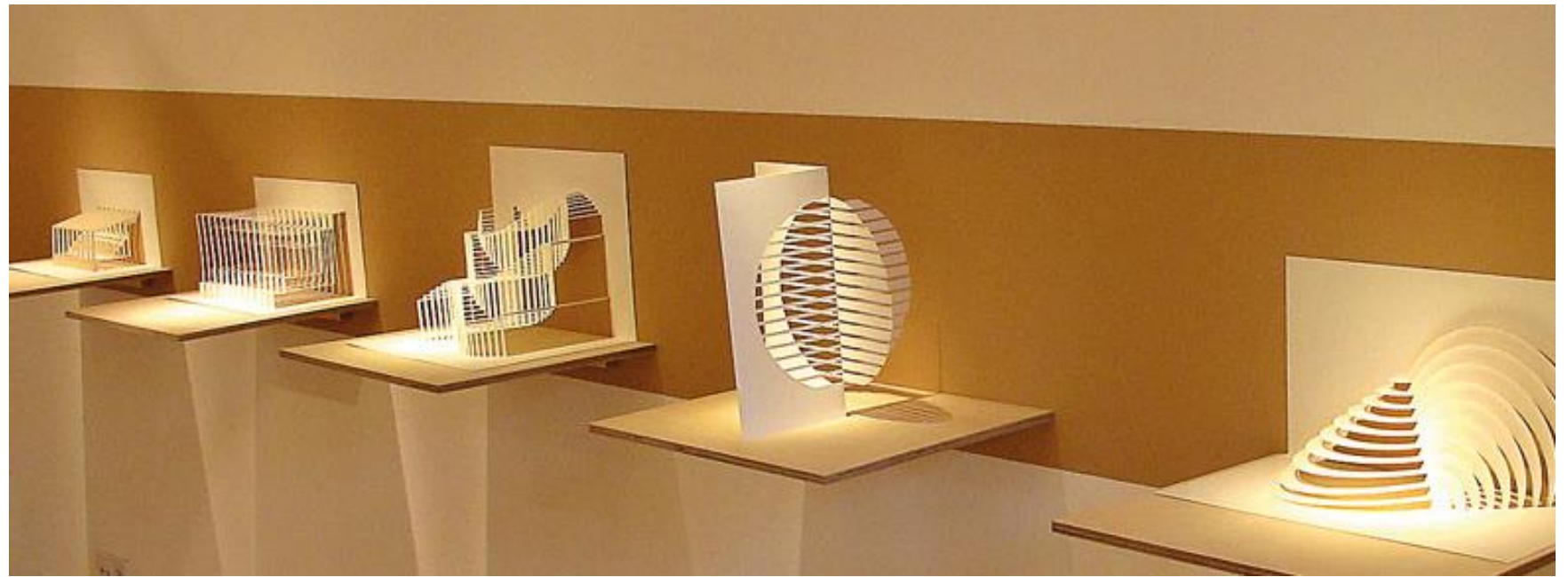
Grundfaltung 1



Grundfaltung 2

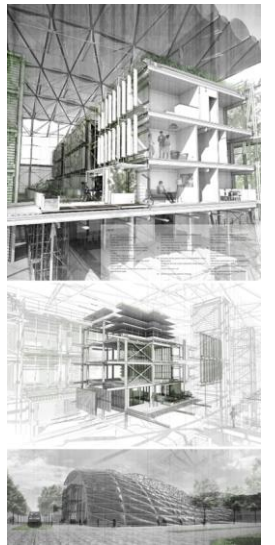


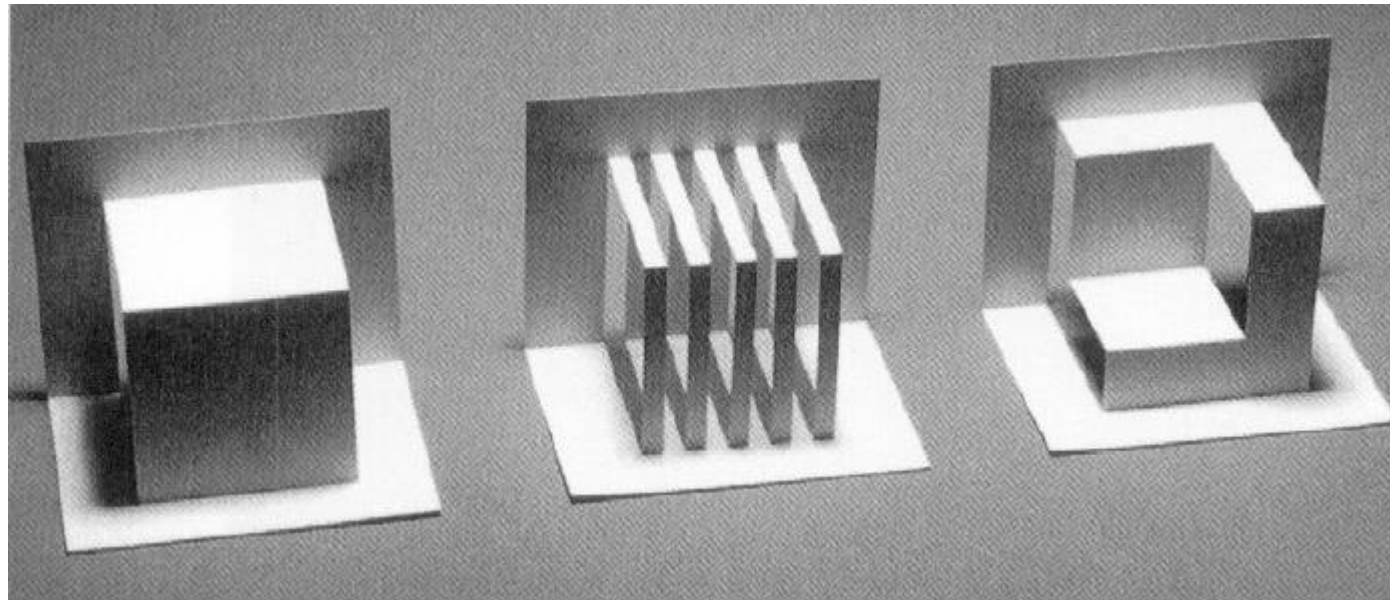
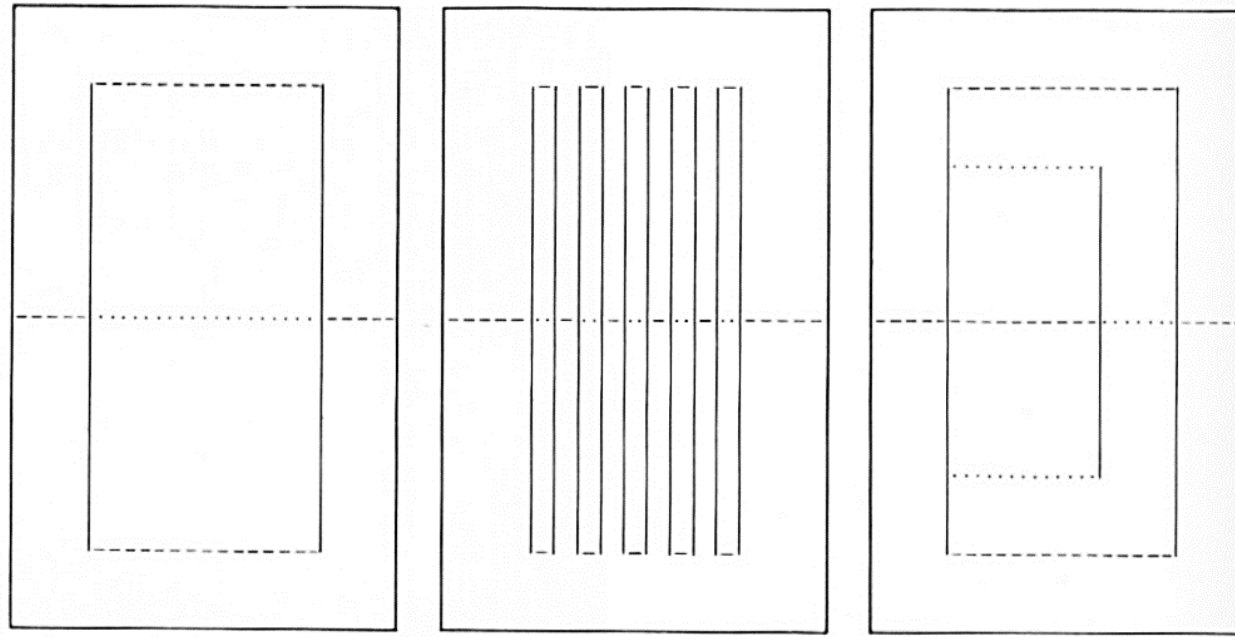
Grundfaltung 3



# KRIGAMI

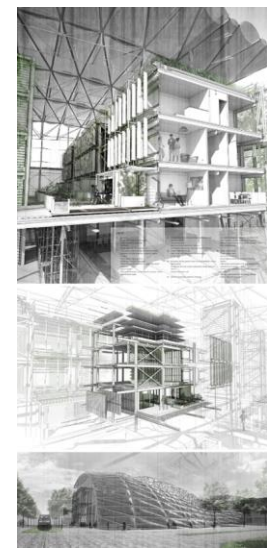
Phantastische Papierarbeiten - RAMIN RAZANI, 1993.

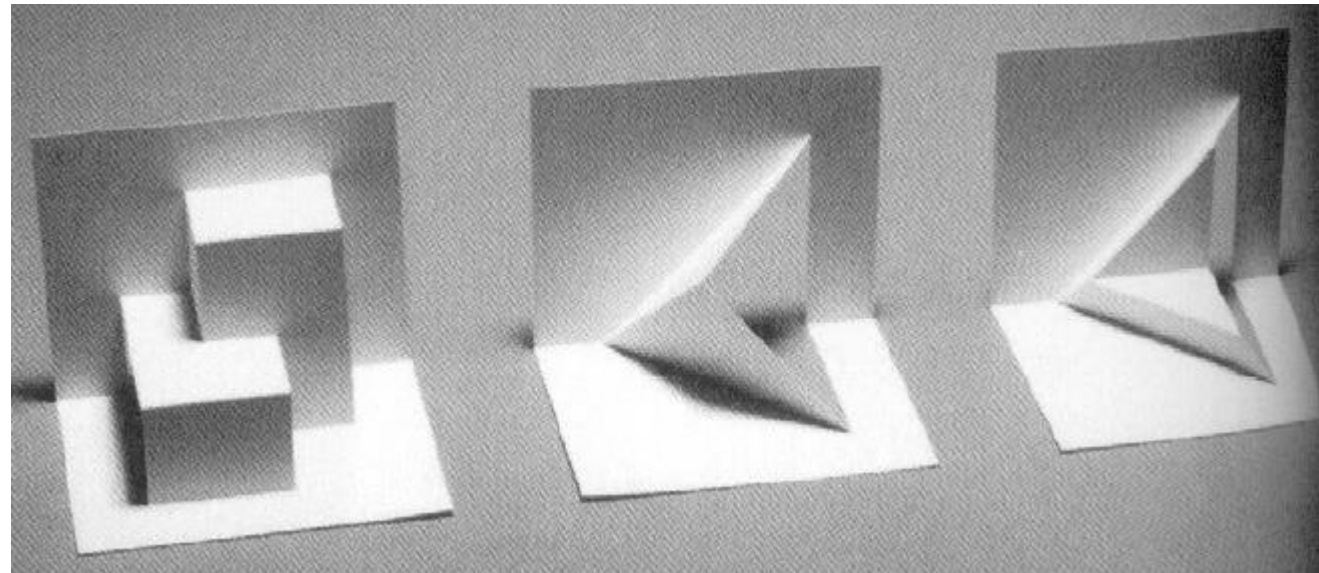
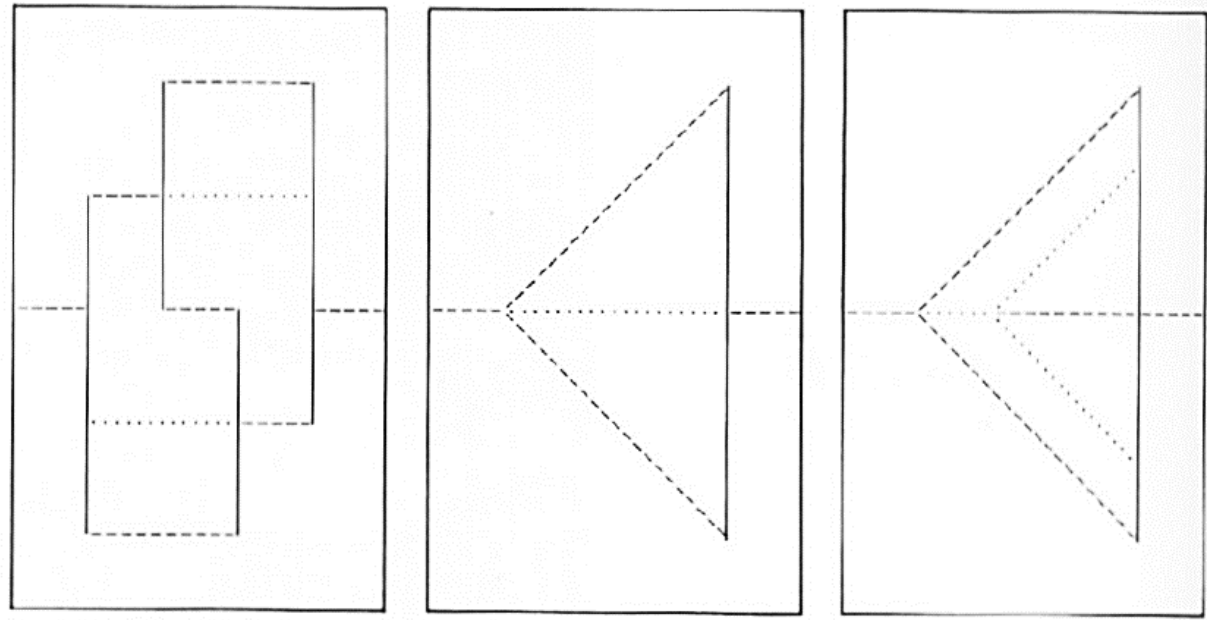




KIRIGAMI

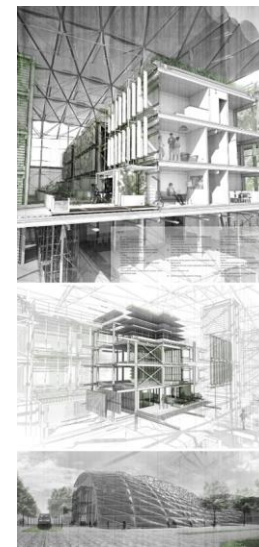
Phantastische Papierarbeiten - RAMIN RAZANI, 1993.

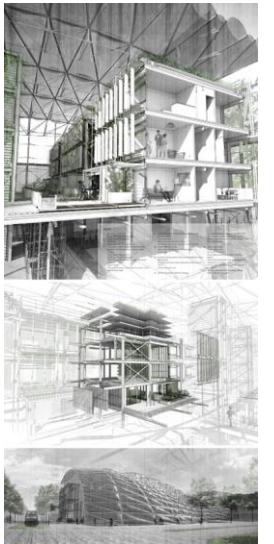
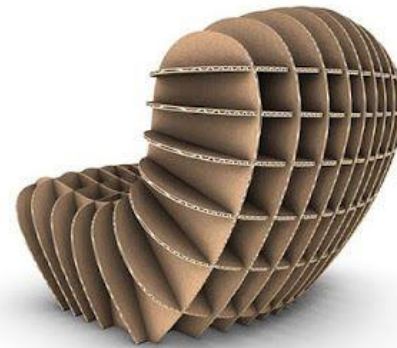
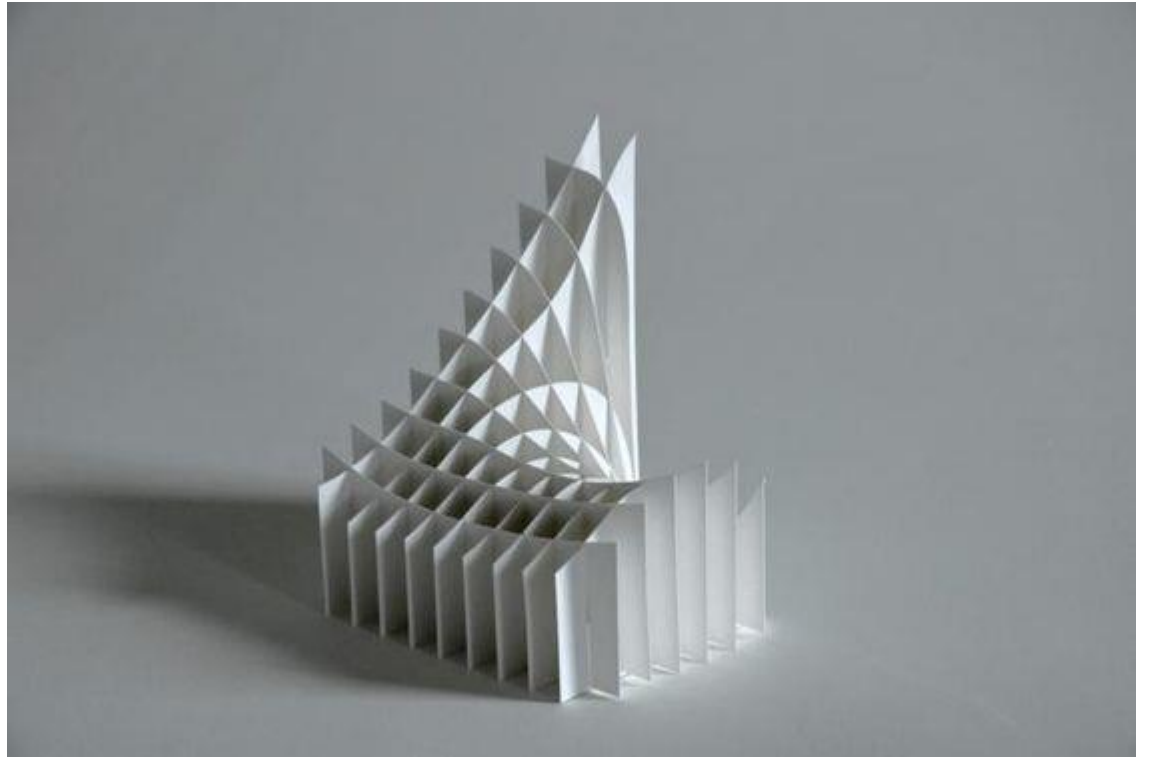




KIRIGAMI

Phantastische Papierarbeiten - RAMIN RAZANI, 1993.



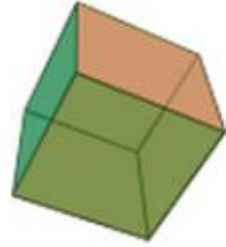


MODELADO SLICE

## Los cinco sólidos Platónicos



Tetraedro



Hexaedro(cubo)



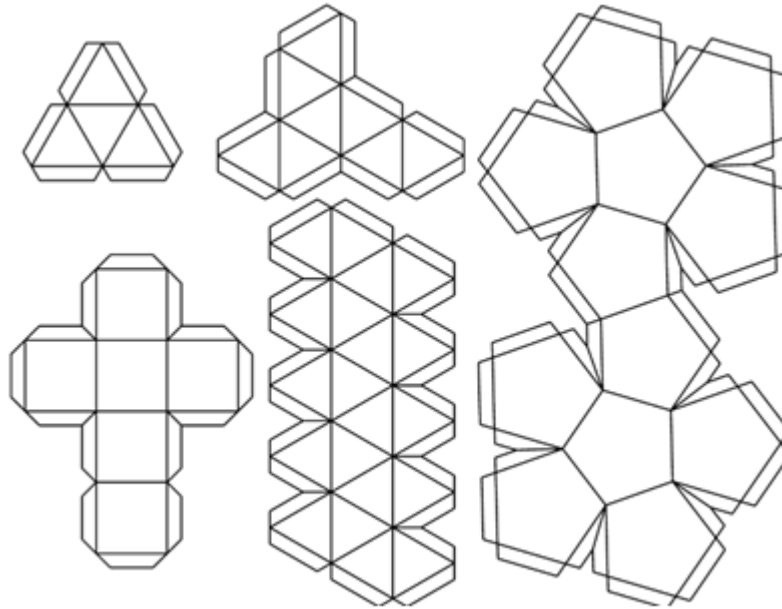
Octaedro



Dodecaedro



Icosaedro



SOLIDOS

PLATONICOS

